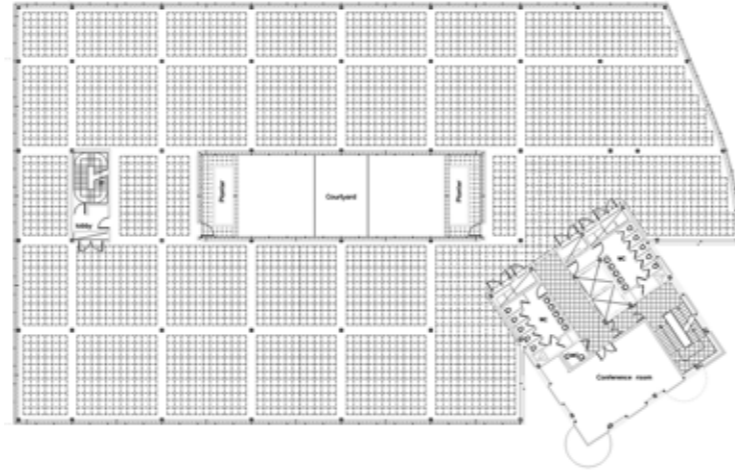


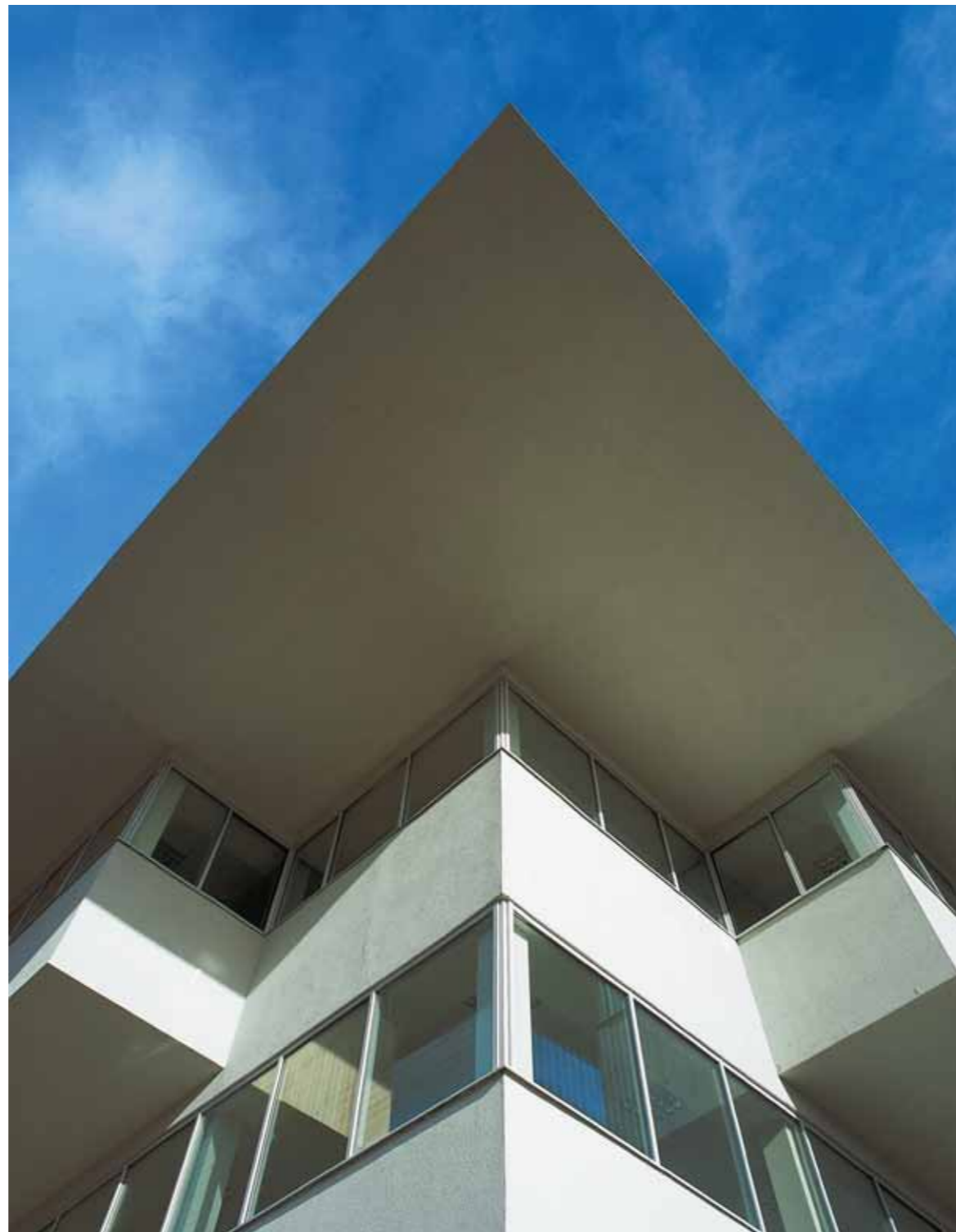
# Edinburgh Park

Edinburgh



Edinburgh Park, between the airport and the city, is one of the most handsomely landscaped business parks in Britain. Its success has led to a densification scheme at the north end of the site with car parking placed under buildings for the first time. CZWG were commissioned to design a speculative office building, which is organised in a flexible rectangle around a central courtyard (a first for the park). The building is entered by a marble clad cube of circulation and services which is skewed to face a new public space defined by neighbouring buildings. Successive floors of the offices cantilever out on south and west elevations, in practice to protect the continuous windowstrips from excessive sun but spiritually to reach out towards the spectacular surrounding topography of the Pentland Hills.

*Client: New Edinburgh*



Not merely solar control, the successive cantilevers 'reach out to the hills'

## Address

Lochside View, Edinburgh Park, Edinburgh

## Client

New Edinburgh

## Local Authority

City of Edinburgh

## Content

5100m<sup>2</sup> office

## Site Area (ha.)

0.44

## Contract Value

£7 million

## Completion Date

October 2001

## Main Contractor

Miller Construction

## Consultants

*Structural*

Halcrow Waterman, Glasgow

*Environmental*

RPS Consulting, Glasgow

*Cost*

Doig & Smith, Glasgow

*Landscape*

Ian White Associates

*CZWG Team*

David Donachie, Luigi Beltrandi,

Mark Burnaby-Davies

## Masterplan Architects

Allan Murray Architects, Edinburgh